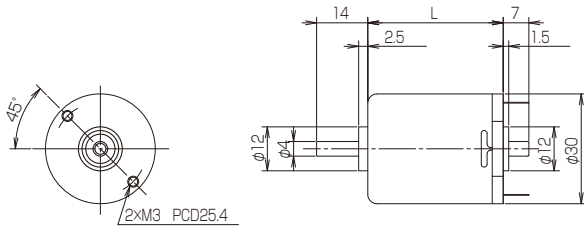


FN30 Series

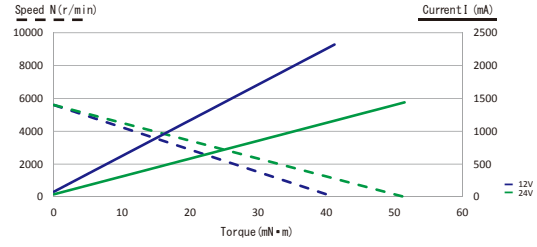
Iron Core [7 Slots]

FN30 SS

寸法図 Dimension

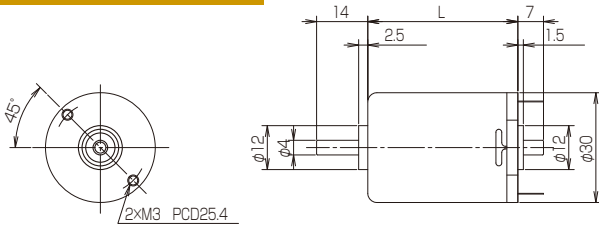


特性図 T-N-I curve

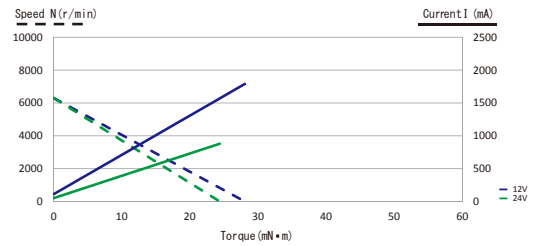


FN30 S

寸法図 Dimension

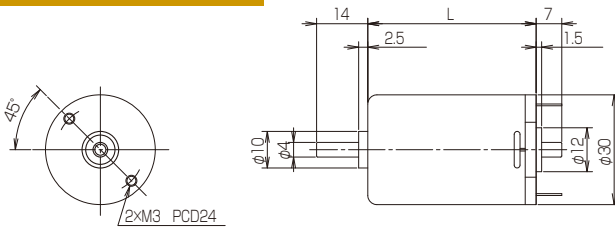


特性図 T-N-I curve

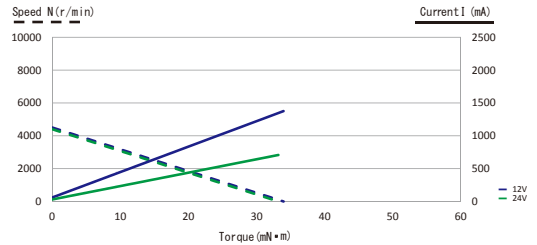


FN30 M

寸法図 Dimension

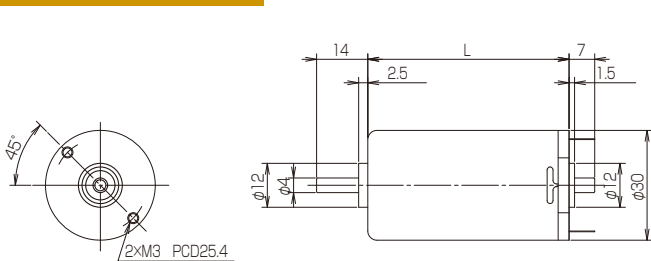


特性図 T-N-I curve

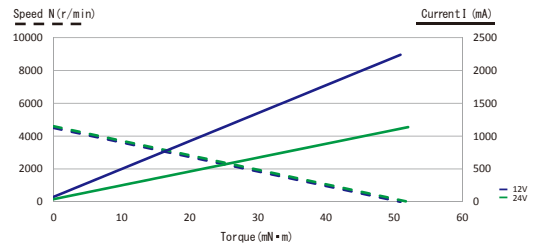


FN30 L

寸法図 Dimension



特性図 T-N-I curve



型番 Model	定格電圧 Rated Voltage		定格出力 Rated Output		定格トルク Rated Torque		定格回転数 Rated Speed		定格電流 Rated Current		軸径 Shaft Dia	無負荷 回転数 No Load Speed		無負荷 電流 No Load Current		起動トルク Starting Torque	起動電流 Starting Current	トルク定数 Torque Constant	端子間 抵抗 Terminal Resistance (winding)	インダク タンス Inductance	イナーシャ Moment of Inertia	機械的 時間定数 Mechanical Time Constant	熱抵抗 Thermal Resistance	寸長 Length	質量 Weight
	V	W	mN·m (gf·cm)	r/min	A	mm	r/min	A	mN·m (gf·cm)	A		mN·m/A (gf·cm/A)	Ω	mH	g·cm ²										
FN30 SS	15	5.20	11.8 (120)	4200	0.52	4.0	5650	0.07	39.2 (400)	1.80	22.6 (231)	8.3	3.3	10.60	17.6	30.2	37.0	95.0							
FN30 SS	24	5.20	11.8 (120)	4300	0.36	4.0	5700	0.04	47.1 (480)	1.30	37.3 (380)	18.3	9.6	10.60	13.4	30.2	37.0	95.0							
FN30 S	12	3.60	7.35 (75)	4650	0.55	4.0	6300	0.11	26.5 (270)	1.80	17.1 (174)	6.7	3.6	14.00	33.0	28.0	41.0	110.0							
FN30 S	24	3.40	7.35 (75)	4400	0.30	4.0	6300	0.05	25.5 (260)	0.88	36.6 (373)	27.3	14.7	14.00	44.0	27.0	41.0	110.0							
FN30 M	12	3.30	9.81 (100)	3200	0.44	4.0	4500	0.06	34.3 (350)	1.50	23.5 (240)	8.0	4.1	22.00	32.0	24.0	46.0	135.0							
FN30 M	24	3.20	9.81 (100)	3100	0.23	4.0	4400	0.03	32.4 (330)	0.73	47.0 (480)	33.0	17.3	22.00	33.0	24.0	46.0	135.0							
FN30 L	12	5.00	14.7 (150)	3200	0.70	4.0	4500	0.08	53.9 (550)	2.40	24.8 (253)	5.0	3.1	32.00	26.0	21.0	55.0	160.0							
FN30 L	24	5.80	14.7 (150)	3300	0.35	4.0	4600	0.04	53.0 (540)	1.20	45.1 (460)	20.0	17.7	32.00	31.0	20.0	55.0	160.0							